



PVT 7.2DX DUAL-AXIS TRACKER GETTING STARTED

A PV Trackers system is designed to maximize your solar energy goals on a particular site. To properly size your site with the optimal number of trackers and tracker spacing to meet your kW hour production goals, we need to design the entire system which includes panels and inverters. PV Trackers will demonstrate your power output using our proprietary software, which is to be used as a guideline only. We will send you a package containing your site plan and power output to serve as a starting point for the design of your solar energy system.

WHAT YOU PROVIDE TO US:

- Site location (Google Earth ID preferable)
- Panel / Module preference
- Inverter preference
- Desired capacity (MW DC or AC) or performance (MWhr/yr)
- Project timelines
 - ▶ Project approval expected date
 - ▶ Construction start date
 - ▶ Power plant commissioning date

Secondary submittals to us:

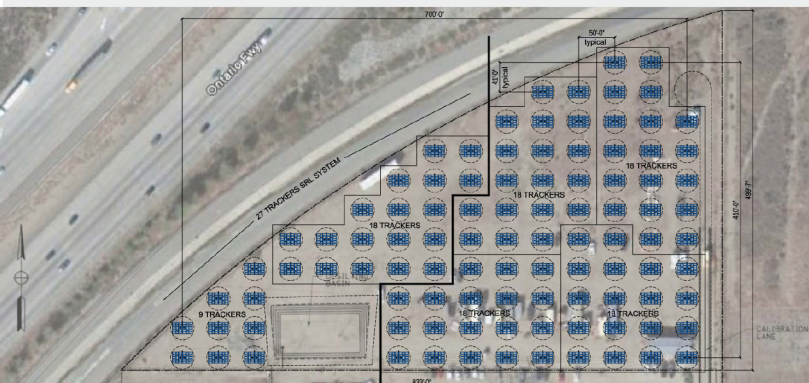
- Site Survey - including topography, setbacks, easements, vegetation and obstructions
- Soils Report
- County / Local approvals for the project (Y/N)
- Interconnect Agreement with local power company (Y/N)

WHAT WE PROVIDE YOU:

- World-Class Technology and Design: The 7.2DX tracker maximizes the amount of power generated by keeping the panels at an orthogonal angle to the sun throughout daylight hours.
- Ease of Installation: 7.2DX provides time and labor advantages, and can be installed and producing energy within hours.
- Economical Solution: The 7.2DX Tracker is designed to extract the most energy for the least amount of cost.
- Outstanding Reliability: Our Site Master software monitors sun position and weather and makes appropriate adjustments, including automatic stowing of the trackers if necessary.

SERVICES:

- Site evaluation: showing our trackers on your site (formats used: CAD, PDF)
- Feasibility studies: showing optimization of land use, performance and costs
- Installation training with manual
- Commissioning support
- Monitoring of solar power plants with our Site Master software



CAPTURING KILOWATT HOURS